



REAR SIGHT LASER

RL-XD

Compact size and revolutionary performance make the new RSL the most extraordinary laser system we've ever produced. Easy-to-install and easy-to-operate, the new Rear Sight Laser gives you a high-power laser with the benefit of not having to replace your existing grips or holster.

- Fits all Springfield XD and XDm pistols
- Works with all Level 1 or Level 2 holsters
- Emissions Indicator
- Ambidextrous Activation Switch

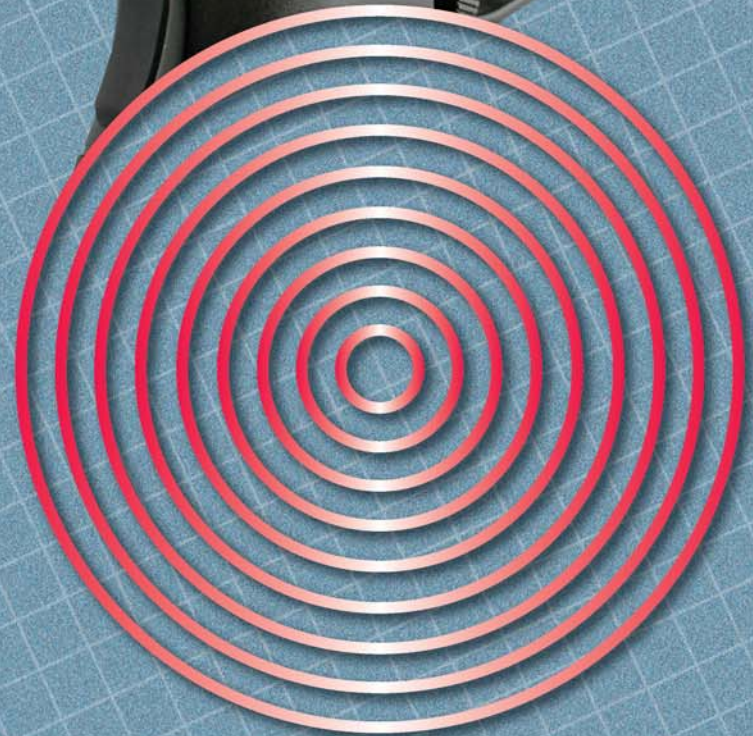
Laser:

- 500-yard range at night
- Next Generation Glass Lens System
- Adjustments for windage and elevation
- Exclusive FSL technology
- Made from MIM 4650, nickel enriched high carbon steel
- 650nm laser module
- Full 5mw of power
- One Year Limited Warranty

Comes complete and ready to use.



REAR SIGHT LASER



DANGER

LASER LIGHT
AVOID DIRECT EYE EXPOSURE

POWER OUTPUT <5mw
WAVELENGTH 630-670nm
CLASS IIIa PRODUCT

RoHS

CE

Printed on recycled paper

6 89706 21034 2

RL-XD

Patents Pending

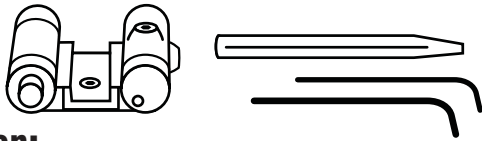


www.laserlyte.com

Accuracy Defined

Rear Sight Laser for all Springfield XD and XDm Models

RL-XD

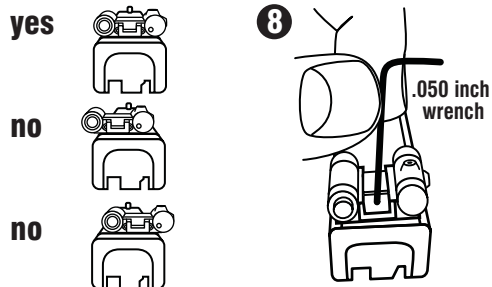
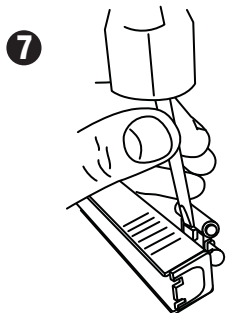
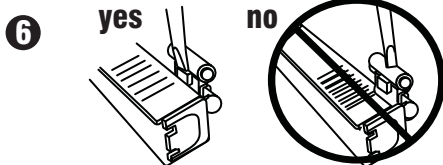
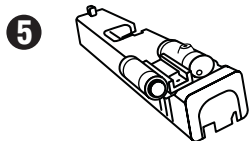
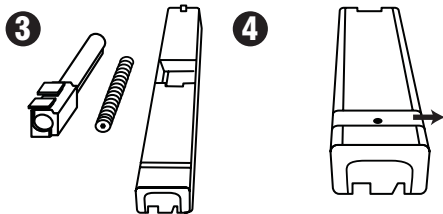


Installation:

- 1 UNLOAD YOUR FIREARM!
- 2 Attach danger label to slide of gun near laser with arrow pointing toward front sight.
- 3 Remove slide from frame, then remove spring and barrel.
- 4 Remove rear sight from slide.
*We recommend using a sight removal tool or contacting a gunsmith.
- 5 With laser facing toward the front, start laser dove tail into the dove tail of the slide.
- 6 Using provided brass punch, place narrow tip of punch onto flat surface of the laser dove tail.
- 7 Using a small hammer, tap punch until the laser is centered in the middle of the slide.
- 8 Using the included .050 Allen wrench, tighten locking screw in the center of the laser.

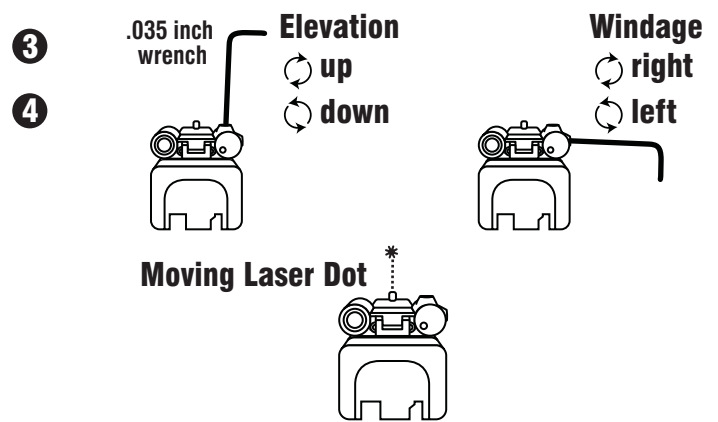
1 UNLOAD YOUR FIREARM!

- 2 Attach danger label to slide of gun near laser with arrow pointing toward front sight.



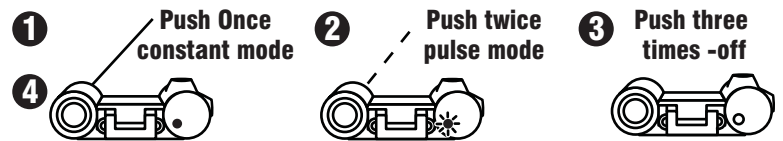
Laser Sight In:

- 1 Assemble barrel and spring into slide and then install back onto gun.
- 2 Make sure your firearm is unloaded and always point in a safe direction.
- 3 Use the provided .035 Allen wrench to adjust the sight.
- 4 Always end adjustments on a clockwise turn.
- 5 Make final adjustments at shooting range.



Activation:

- 1 Push button once and the laser will be on constant mode.
- 2 Push button twice and the laser will be on pulse mode.
- 3 Push button three times the laser will turn off.
- 4 The small L.E.D. on the back will indicate what mode you are in.



Battery Installation: (4) 377

- 1 Unscrew battery cap and remove batteries.
- 2 Install new batteries.
- 3 Screw in battery cap and tighten.



Uninstall:

- 1 Follow steps 1-3 in Installation Instructions.
- 2 Back out setscrew in center of Laser.
- 3 Using brass punch put the narrow end of the punch on the flat surface of the laser dove tail.
- 4 Using a small hammer drive the laser out from right to left.
- 5 Back out laser setscrews until flush.
- 6 Wait 15 minutes for adjustment reset and reinstall if desired.

WARRANTY:
One Year Limited
Warranty.



LASERLYTE
A Division of P&L Industries
101 Airpark Road - Cottonwood, AZ 86326
Phone 928-649-3201 - Fax 928-649-3970
www.LaserLyte.com